

Mapping Poverty in Alachua County

Jason Aberman

Trevor Boyle

Alex Dever

Nathan Gonzalez

Objective

To map out spatially who and where the poor are in Alachua County, analyze which services are accessible to them, and correlate the proper data to find solutions that will bring the services closer to those who need them.

Primary Issue

Are the civil services of Alachua
County reaching our poor?

Who are the Poor?

The 2009 Poverty Guidelines for the 48 Contiguous States and the District of Columbia

Persons in family	Poverty guideline
1	\$10,830
2	14,570
3	18,310
4	22,050
5	25,790
6	29,530
7	33,270

Source: <http://aspe.hhs.gov/POVERTY/09poverty.shtml>

Who are the Poor?

- Single parent households who fall within the poverty guidelines
- Families not within walking distance of services
- Low density school areas
- Students who are on reduced lunch programs

Where are the Poor?

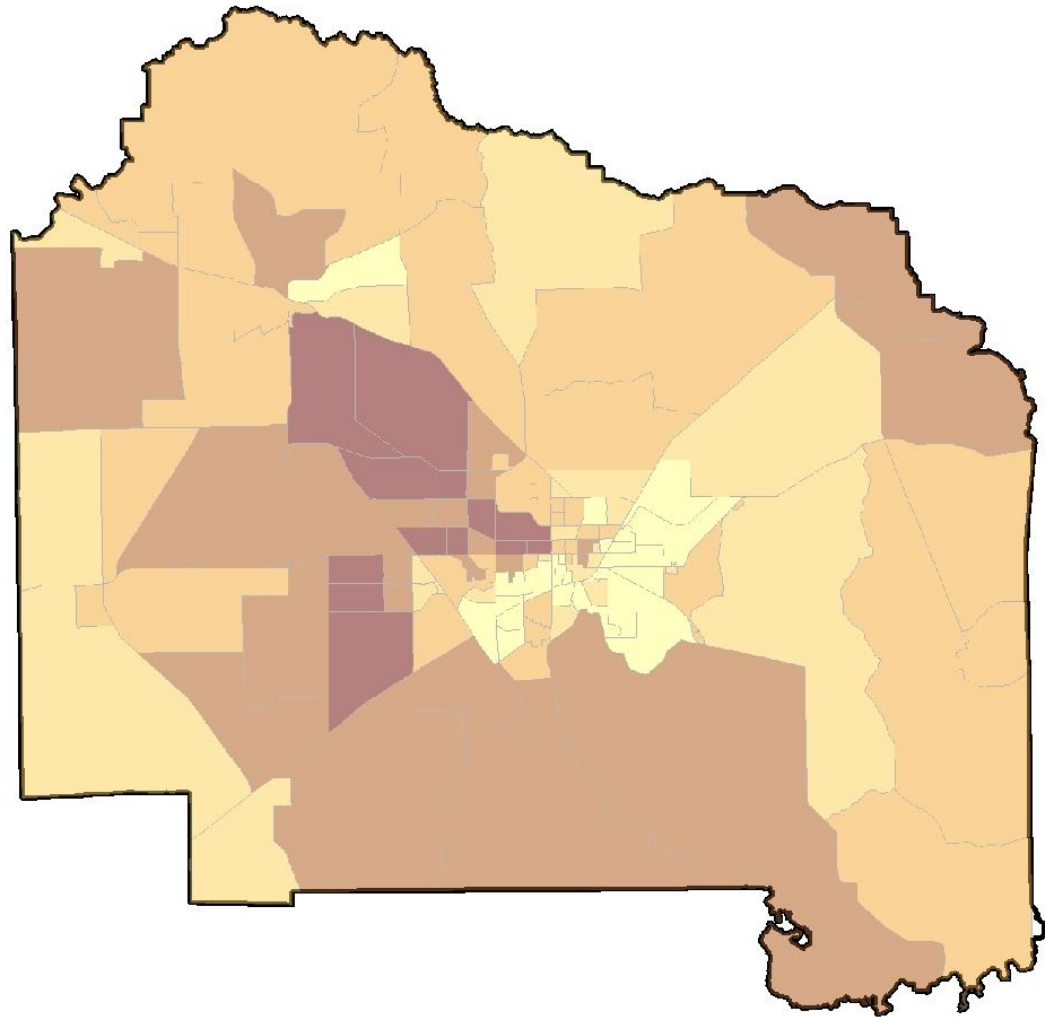
Geospatial Information Systems [GIS]

- Data Correlation
 - Joins
 - Cenus_blkgrp.shp
 - Cenblk01.shp
 - p52_houshold_inc [dBASE Table]
 - Selections
 - Attribute
 - Location

INCOME DISTRIBUTION

LEGEND
Census Block Group
Per Capita Income

3567 - 11085
11086 - 15524
15525 - 20822
20823 - 28182
28183 - 44107



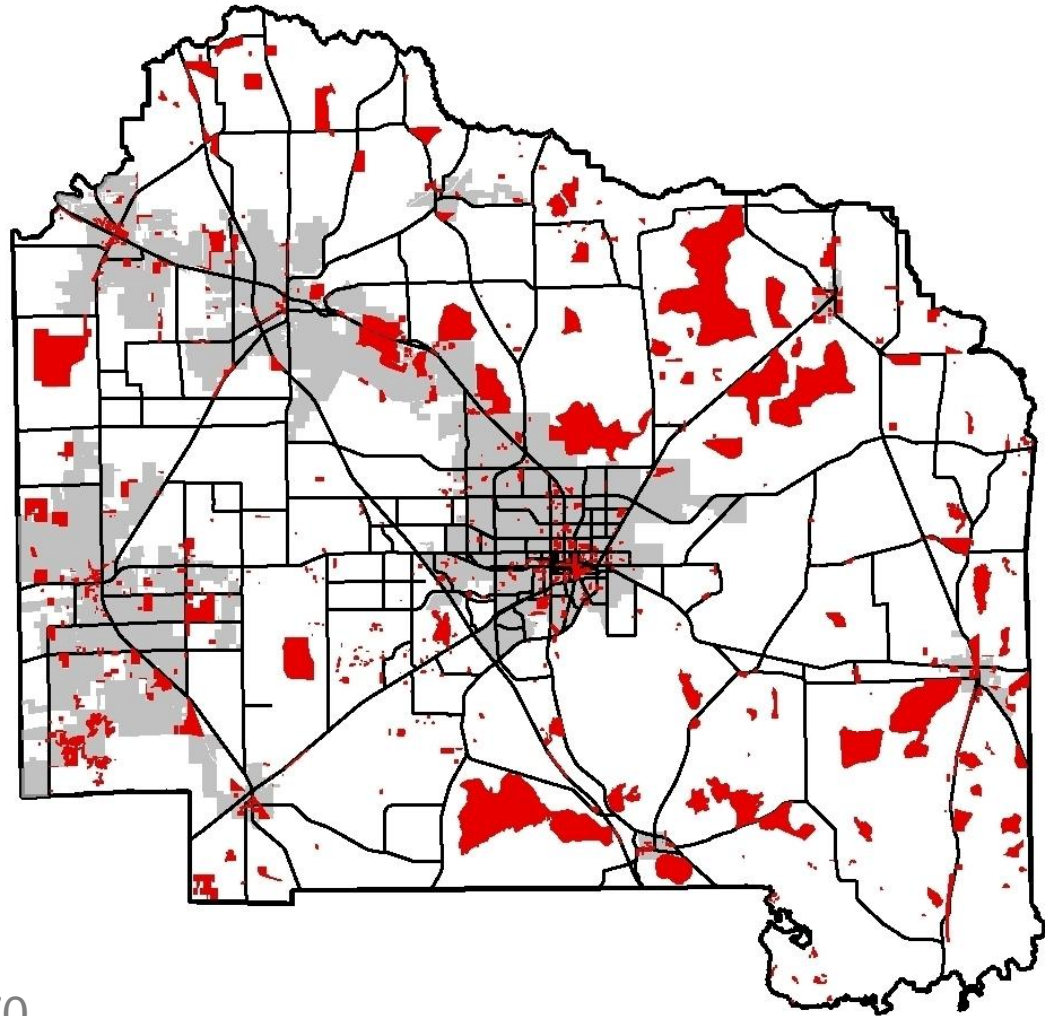
0 3.5 7 14 Miles



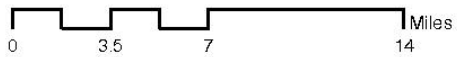
WHERE ARE THE POOR?

LEGEND

- Single Parents HHS 2
- Major Roads
- Municipalities



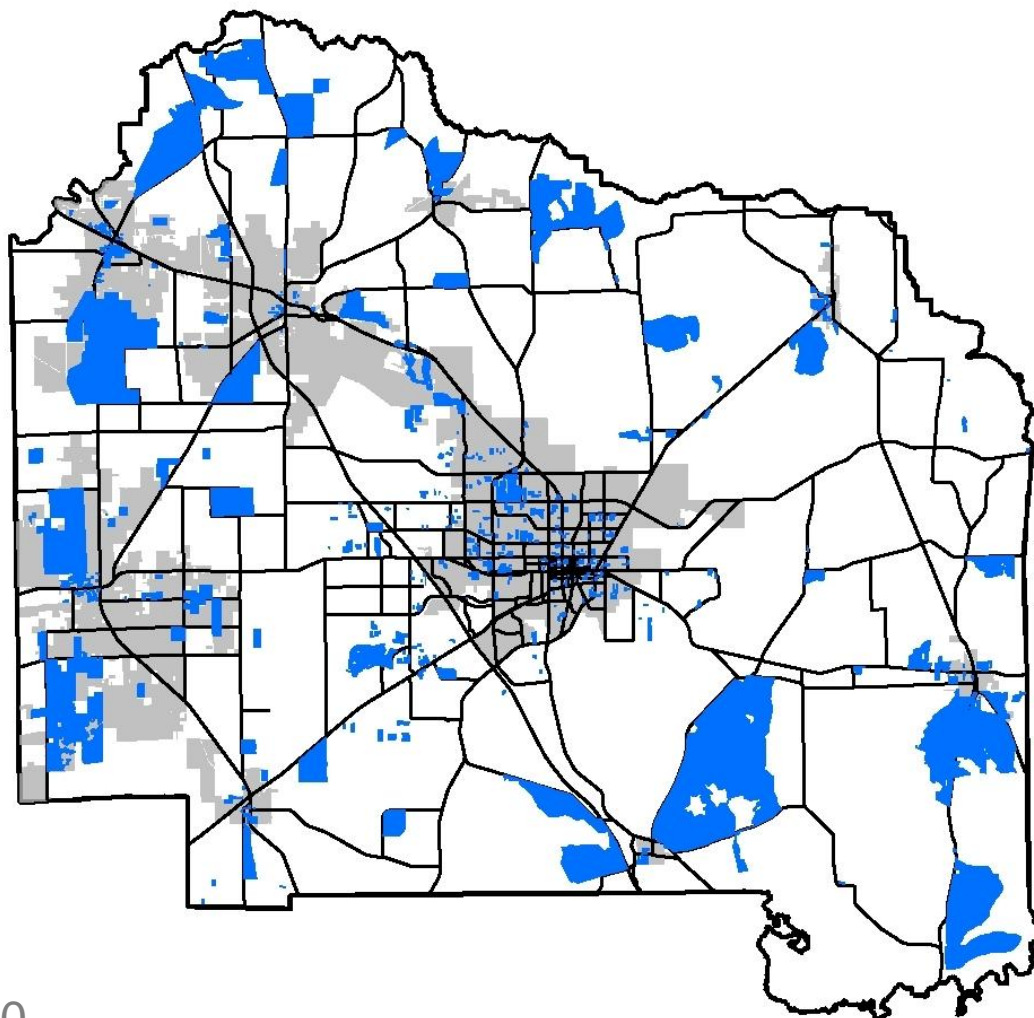
Poverty Guideline: < \$14,570



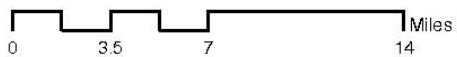
WHERE ARE THE POOR?

LEGEND

- Single Parents HHS 3
- Major Roads
- Municipalities



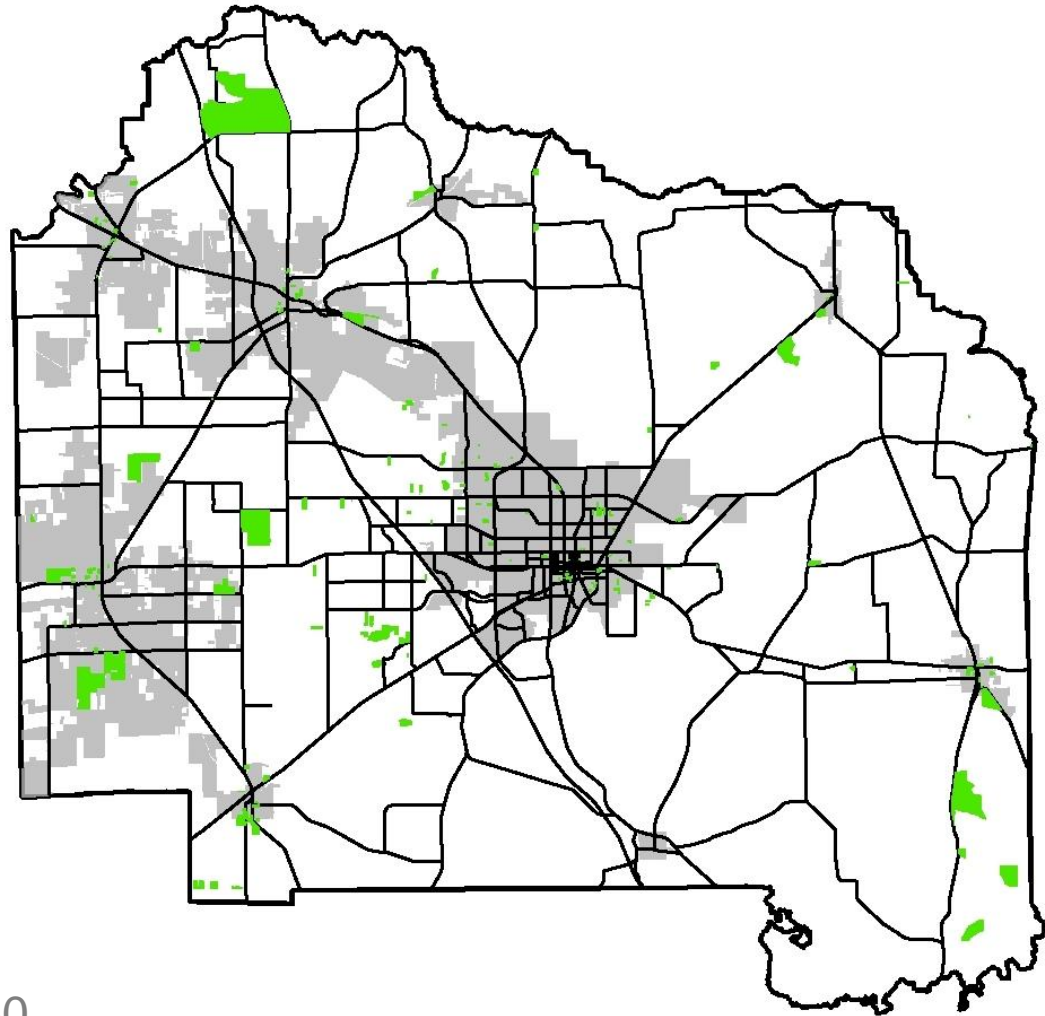
Poverty Guideline: < \$18,310



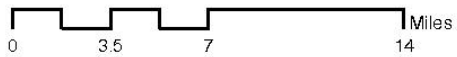
WHERE ARE THE POOR?

LEGEND

- Single Parents HHS 4
- Major Roads
- Municipalities



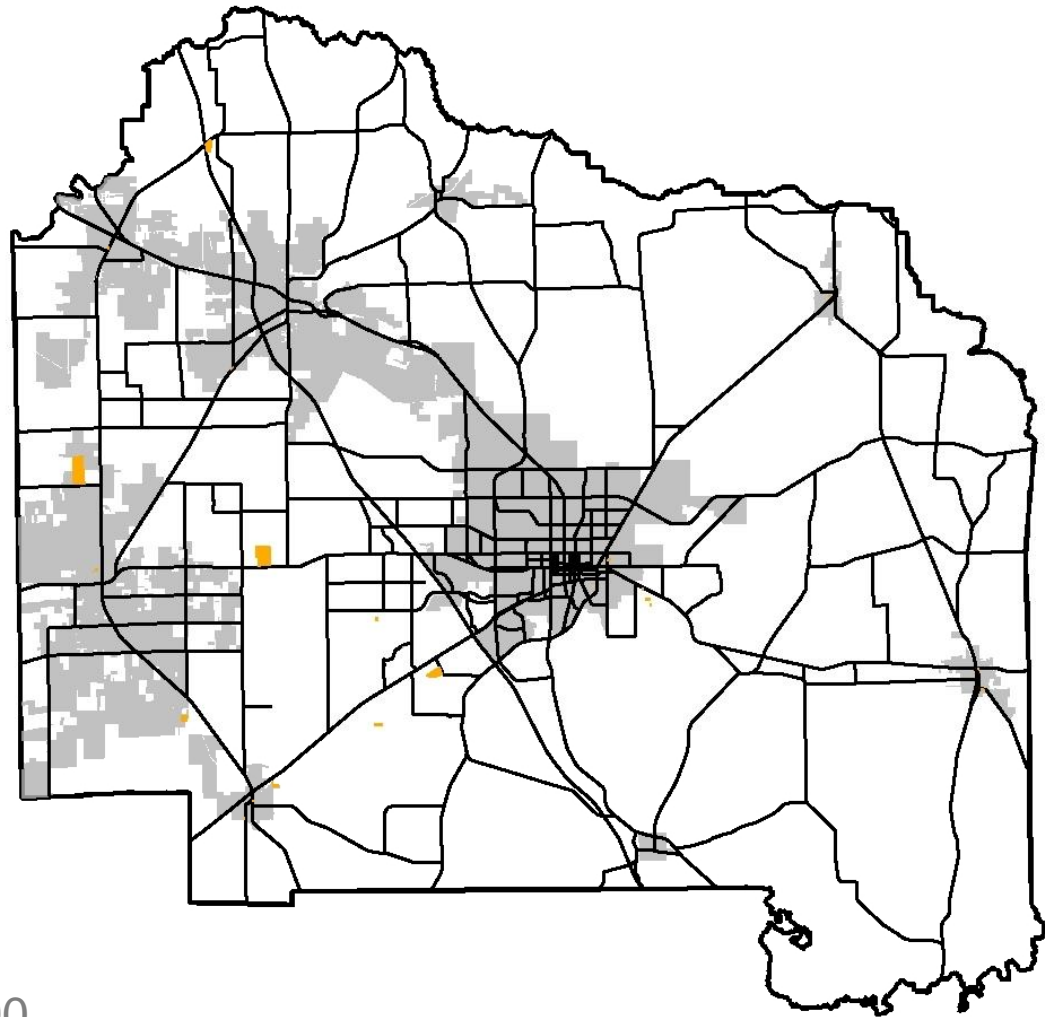
Poverty Guideline: < \$22,050



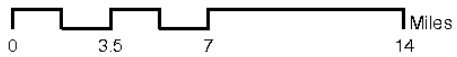
WHERE ARE THE POOR?

LEGEND

- Single Parents HHS 5
- Major Roads
- Municipalities



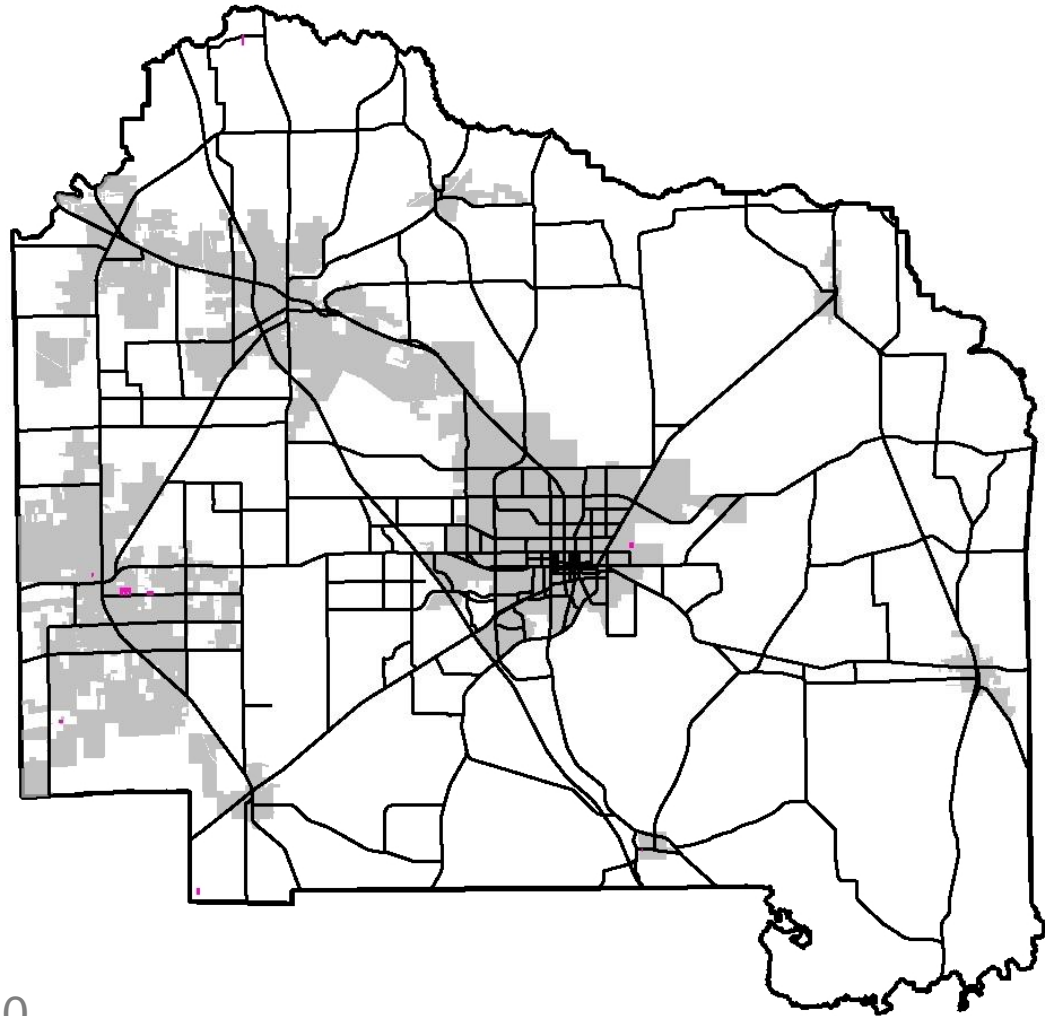
Poverty Guideline: < \$25,790



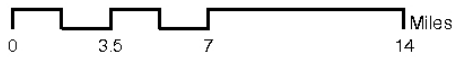
WHERE ARE THE POOR?

LEGEND

- Single Parents HHS 6
- Major Roads
- Municipalities

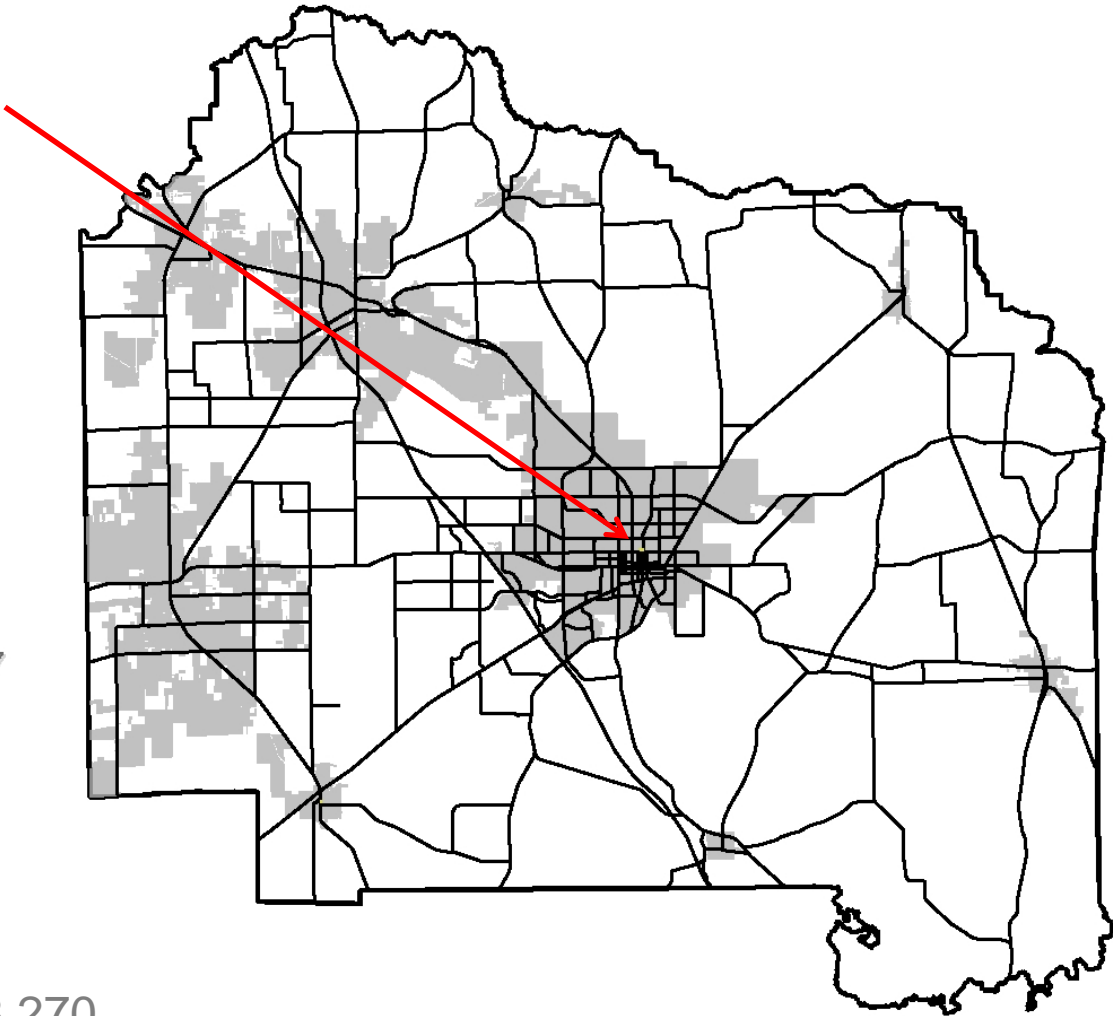


Poverty Guideline: < \$29,530



WHERE ARE THE POOR?

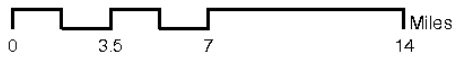
Wait...
Where...
Oh, there it
is!



LEGEND

- Single Parents HHS 7
- Major Roads
- Municipalities

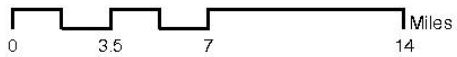
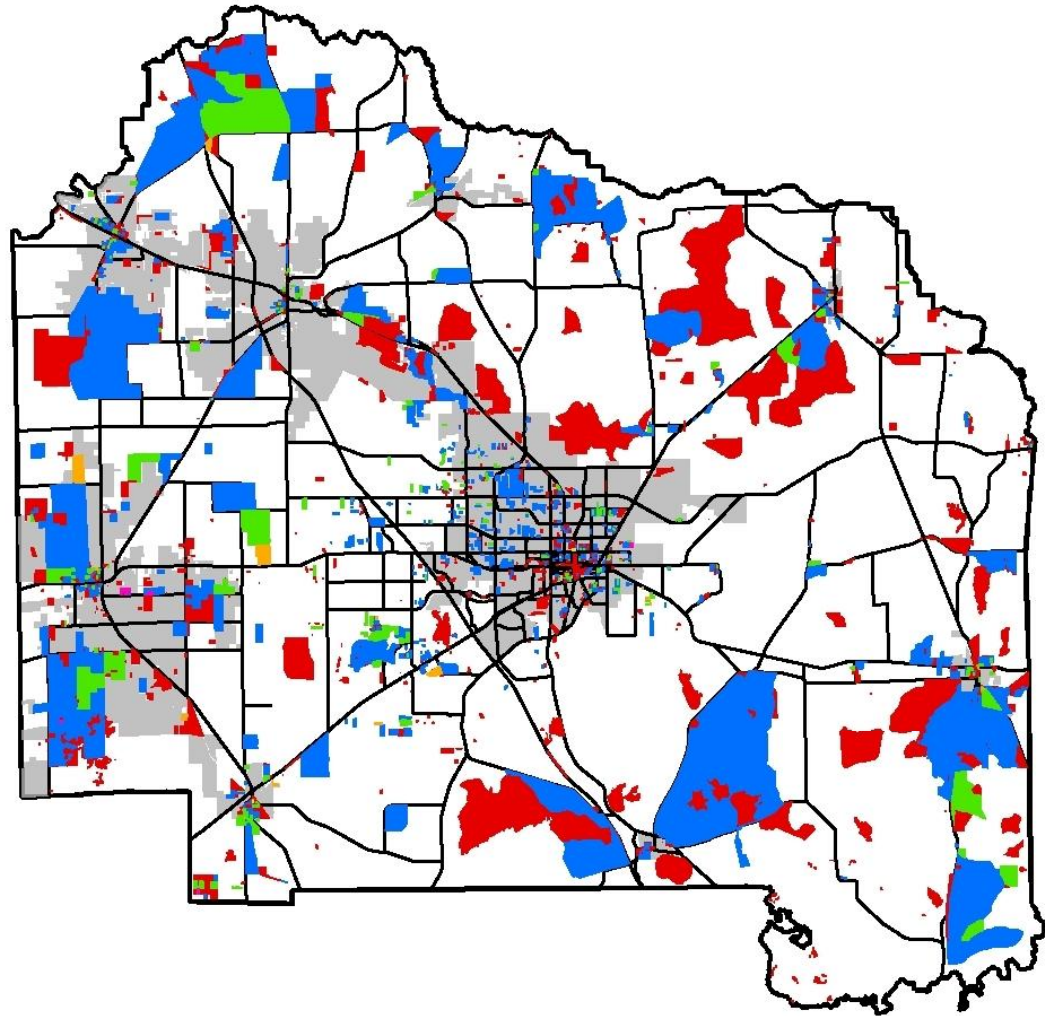
Poverty Guideline: < \$33,270



WHERE ARE THE POOR?

LEGEND

- Single Parents HHS 7
- Single Parents HHS 6
- Single Parents HHS 5
- Single Parents HHS 4
- Single Parents HHS 3
- Single Parents HHS 2
- Major Roads
- Municipalities

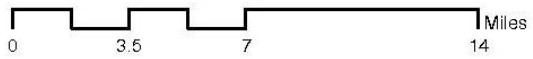
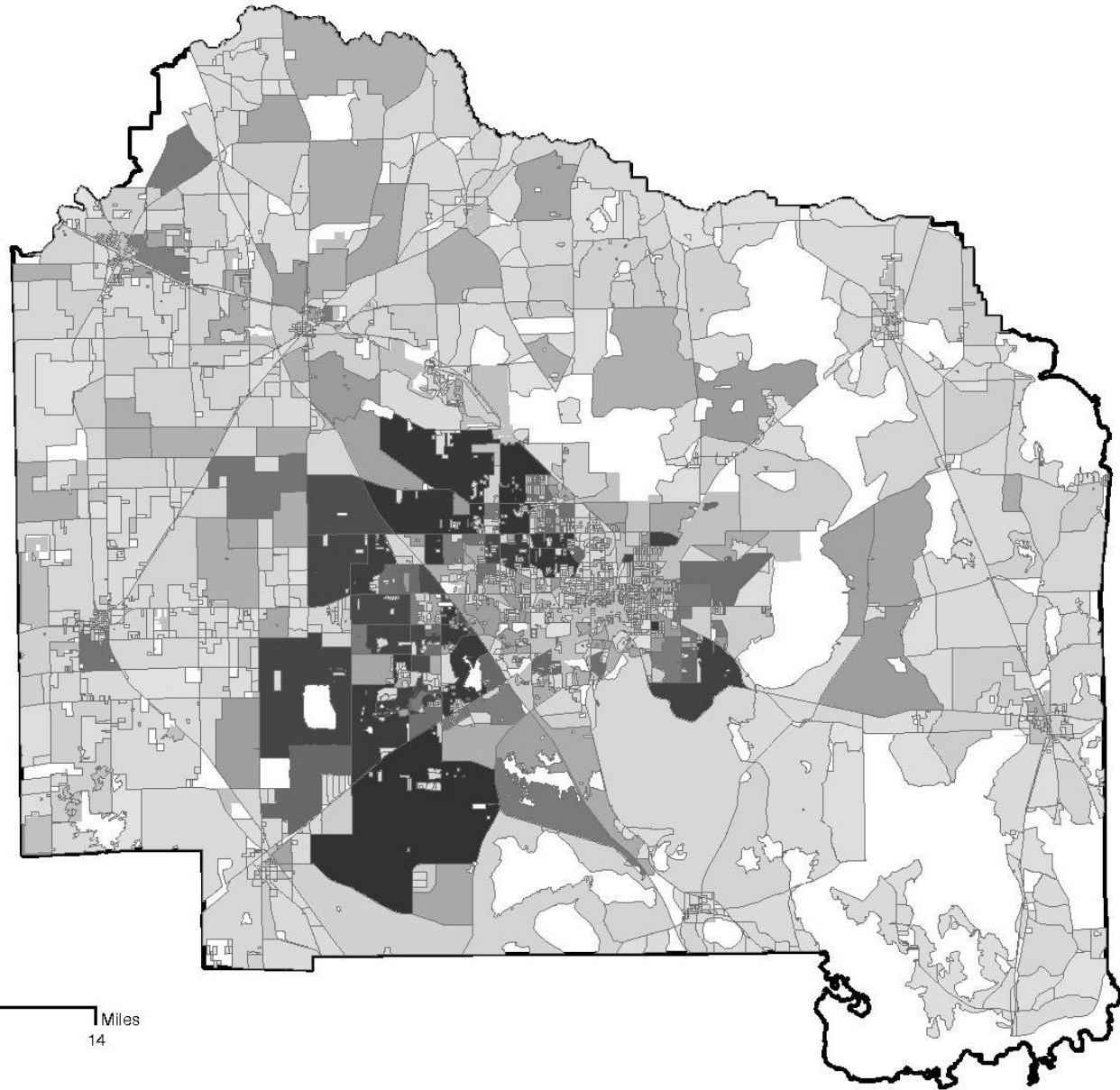


Early Education and Poverty

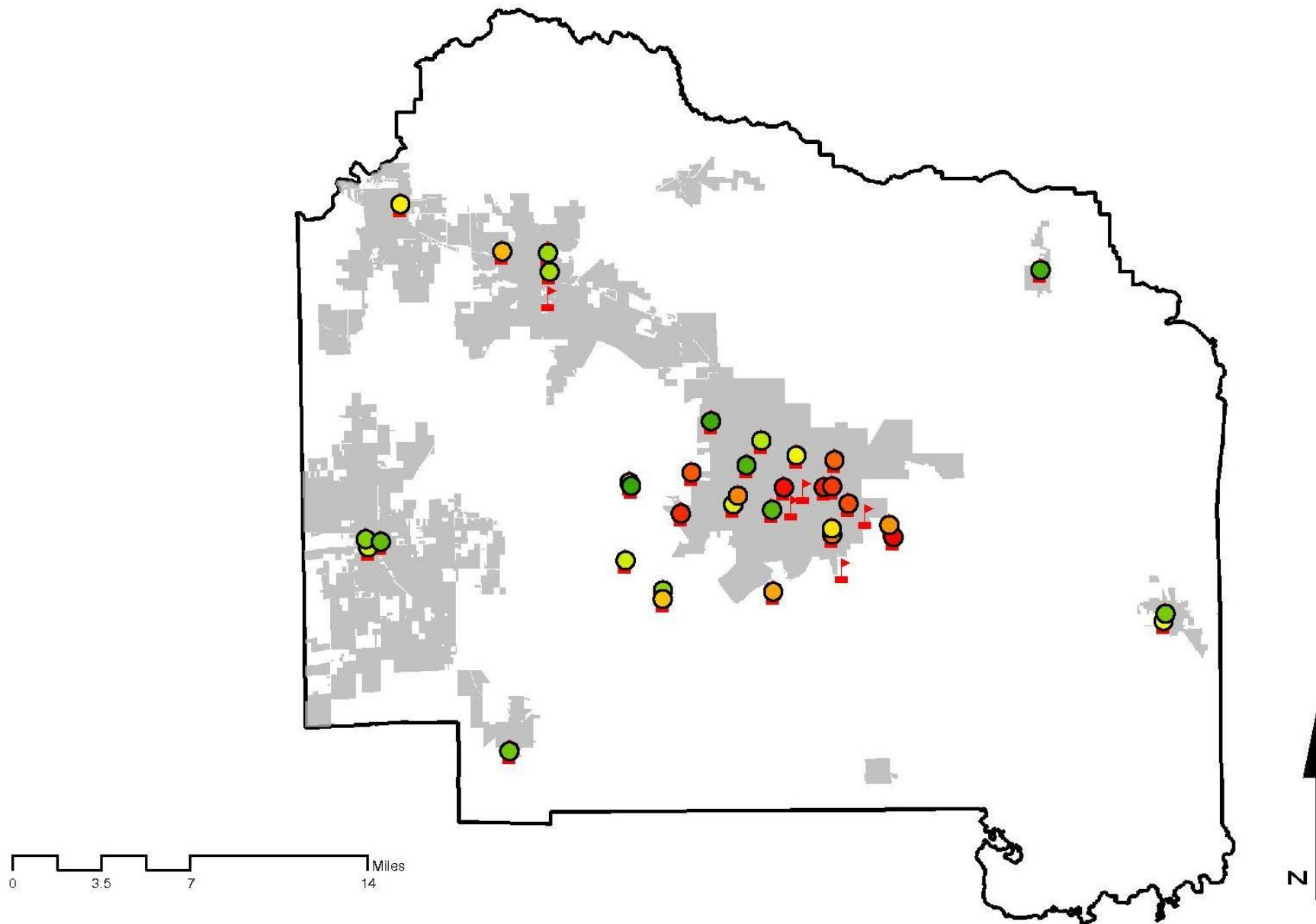
Geospatial Information Systems [GIS]

- Data Correlation
 - Information manipulation
 - Comparisons/differences
 - Merging together
 - Selections
 - Attribute
 - Location
 - Visual construction
 - Arrangement/interpolating

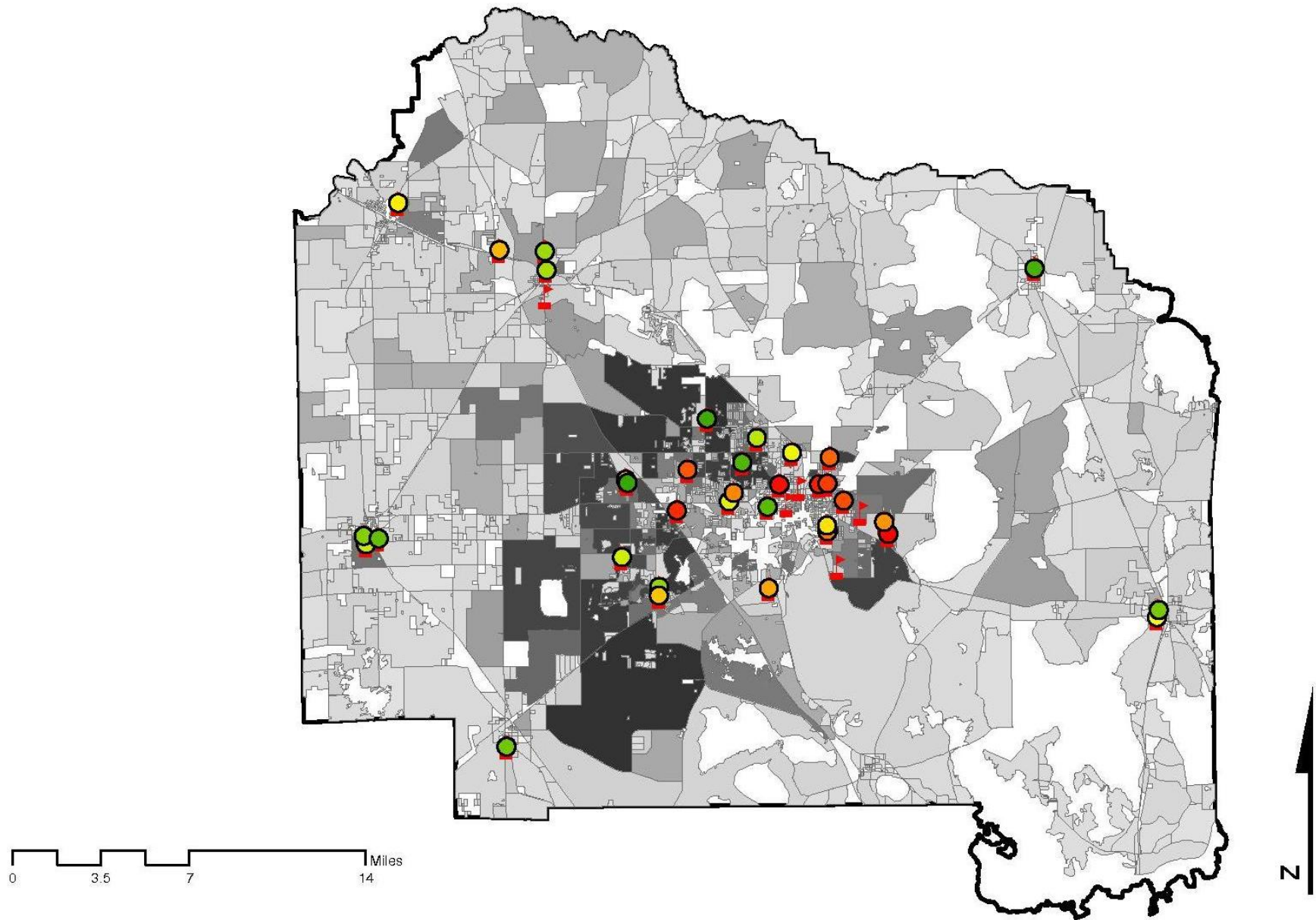
STUDENT DENSITY



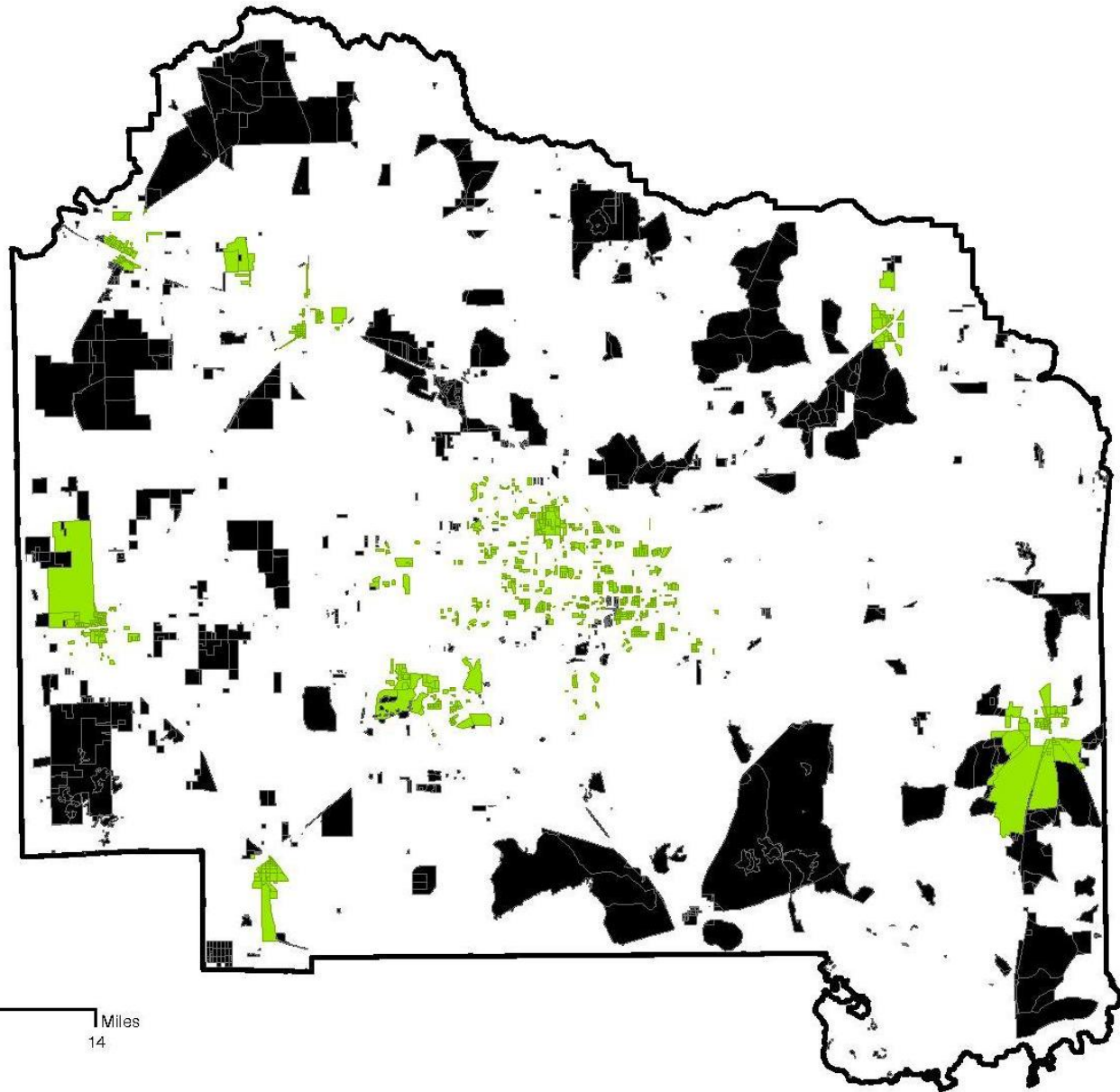
SCHOOL FREE LUNCHES



AVAILABILITY / NEED



HOUSEHOLD PROXIMITY



0 3.5 7 14 Miles

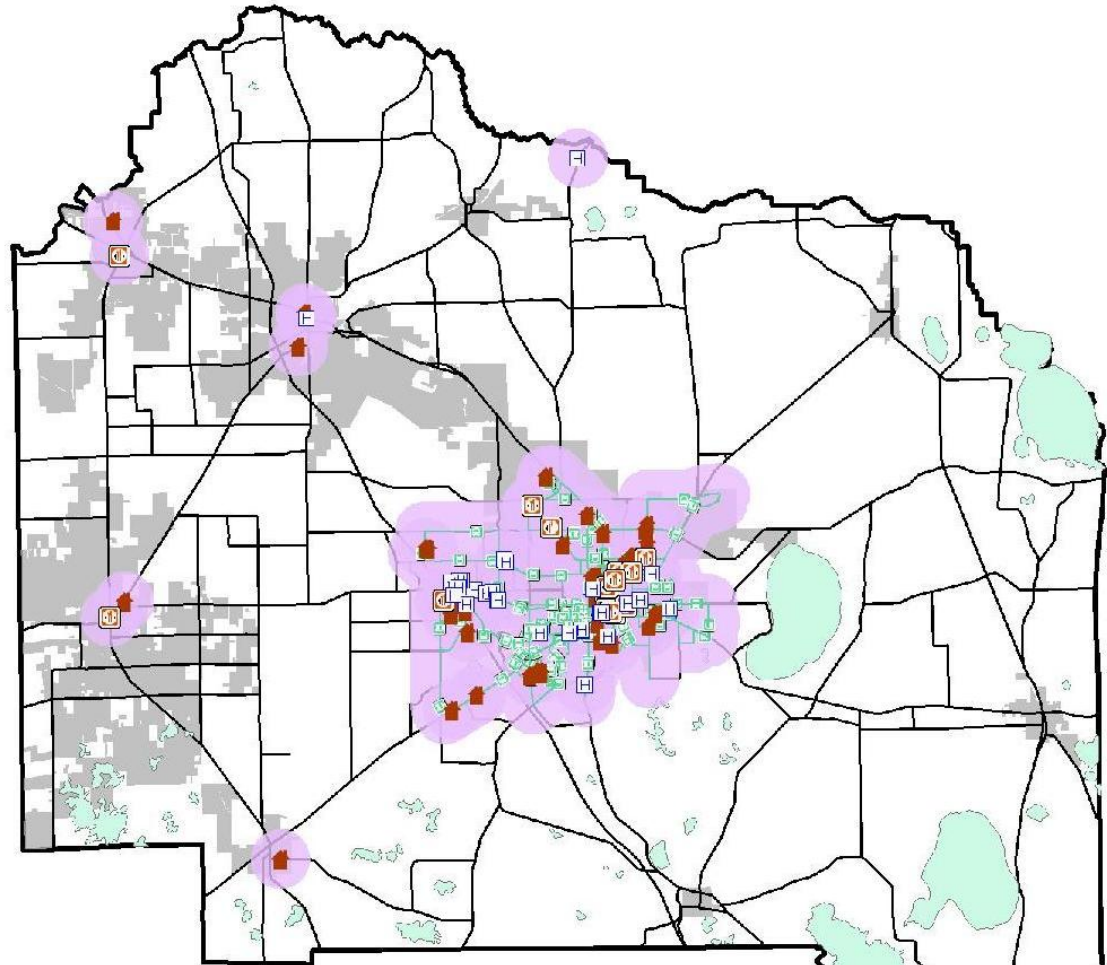


What Services are Available?

Geospatial Information Systems [GIS]

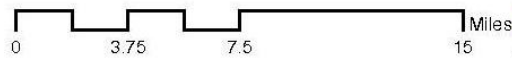
- Data Correlation
 - Display Changes
 - Changed Symbols
 - Adjusted transparency
 - Selections
 - Attribute
 - Location
 - Construct Buffers
 - Walking Distance = 1mile

WHAT SERVICES?



LEGEND

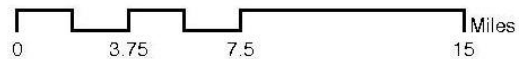
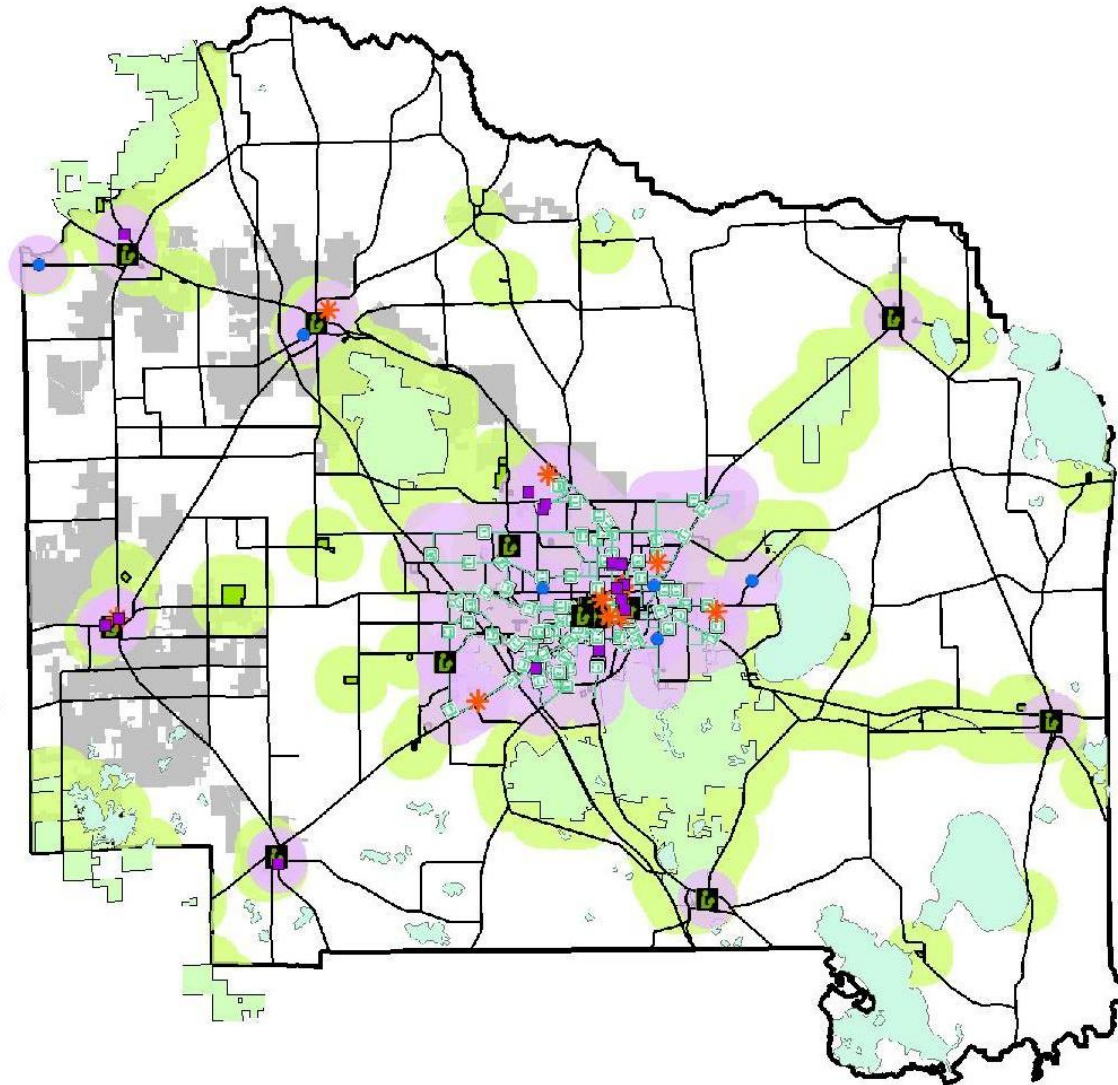
-  MEDICAID PROVIDERS
-  ASSISTED FOOD SERVICES AND SHELTERS
-  ASSISTED RENTAL HOUSING
-  RTS BUS ROUTES
-  WALKING DISTANCE
-  MAJOR ROADS



WHAT SERVICES?

LEGEND

- THRIFT STORES
- * OUTREACH CENTERS
- SWIMMING POOLS
- 📖 LIBRARIES
- RTS BUS ROUTES
- MAJOR ROADS
- WALKING DISTANCE
- LAKES
- PARKS
- PUBLIC PARKS
- OTHER PARKS
- NATURAL RESOURCES
- PARKS WALKING DISTANCE



Conclusion

COMPOSITE MAP

